

We test, You produce.

IONIQ 6SW

LEAK DETECTOR FOR HIGH VOLUME PRODUCTION

On the basis of its well proven concept of production line QC Testers, ATEQ has developed a new leak tester designed for the specific requirements of high volume production of plastic parts. This instrument is used for the detection of localized moulding faults, insufficient membrane thickness, perforations, etc.

The IONIQ is based on discharge current measurement and is able to detect defects up to of $10\mu\text{m}$.

Highlights

- 6 SIMULTANEOUS TEST CHANNELS
- DISPLAYS 6 CHANNELS
- FOR INDUSTRIAL & LABORATORY

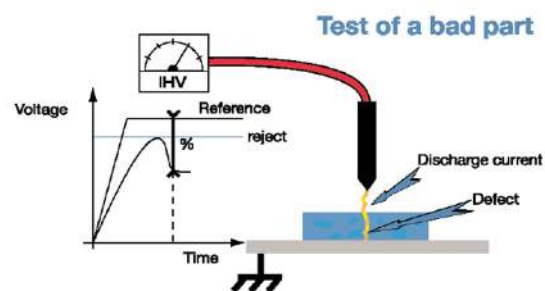
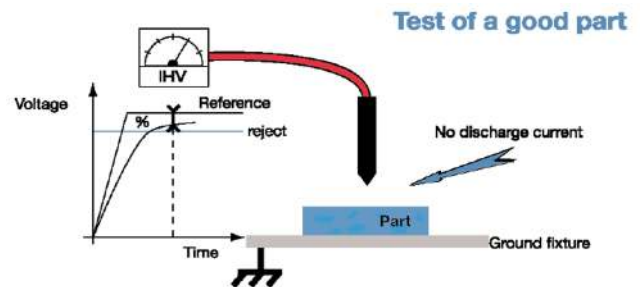


IONIQ 6SW

LEAK DETECTOR FOR HIGH VOLUME PRODUCTION

Operation

- The IONIQ measures the current flowing between a patented charged probe and a ground plate placed under the part to be tested.
- The IONIQ uses the % of the nominal voltage (which reflects the discharge current), measured on the part as PASS/FAIL level.
- **In a PASS situation (fig 1):**
No hole, no weak part, the IONIQ measures a high %. The measured voltage and the nominal voltage are virtually equal. The result is above the reject level, the part has passed the test.
- **In a FAIL situation (fig 2):**
The IONIQ measures a low %. The measured voltage is significantly below the nominal voltage. The result is below the reject level, the part has failed the test.
- Test limitations: short probe-part-plate distance, electrical insulation from environment.



Technical Features

- Temperature
Operating : + 10°C to + 45°C
Storage : 0°C to + 60°C
- **Dimensions**

Instrument	Remote control
350 x 200 x 250 mm	250 x 250 x 60 mm
Weight : 9.4 kg	Weight : 2.8 kg
- Power supply
Main : 90 V to 240 V AC
Single phase : 50/60 Hz - 45 W
Note: It is vital that the instrument has a good ground connection
- Interfaces: Programming via remote control
7 inputs / 5 outputs for PLC controlled applications.
Inputs:
Optically isolated.
24 V - 10 mA maximum or dry contact.
Outputs:
Relay output
Rated 48 V / 200 mA maximum.
- Optional
Save results module, Test charge one channel

Main Features

- Integrated ionizing high voltage generator
Integrated and adjustable according to application
(5 to 27.3 kV)
- Reject levels as % of nominal voltage
(0 to 100%)
- Monitoring and protection of high voltage generator
- Limitation of the current rating
- Speed: Minimum cycle time 0.6s
- I/O's for instrument control and results
- 32 programs
- Measuring box and remote control
- Timestamp, language selection,

ATEQ

35980 Industrial Rd. - Livonia, MI 48150
Tel: 734-838-3100 - Fax: 734-838-0644 - Email: leaktestsales@atequsa.com - www.atequsa.com
Technical specifications can change without any prior notice. ATEQ, and the ATEQ logo are registered trademarks of the ATEQ group.

