

We test, You produce.

HYDRA

MULTI-CHANNEL LEAK TESTER

The only multi-channel leak tester in one case that allows you to remove one channel for service or calibration and continue to leak test with the remaining channels.

Hydra allows simultaneous or sequential pressure decay leak testing on four completely independent channels. Each channel has its own leak test transducer and each leak test channel has less than 1.5 cc of internal volume.

Hydra uses a color touchscreen with WinAteq 300 software which includes: SPC, data collection and various real time leak test results displays.

Includes four RS232 ports, two USB ports and four discrete I/O cards. A variety of front test port fittings are available

Highlights

- COMPETITIVELY PRICED
- COLOR TOUCHSCREEN
- EASY SET UP



HYDRA

MULTI-CHANNEL LEAK TESTER

Measurement Ranges

PRESSURE	Max resolution	Δ MEASUREMENT	Max resolution
vacuum	1 mbar	500 Pa-1000 Pa-2000 Pa- 5 kPa 500 Pa	1 Pa-10 Pa
-500/+500 mbar		-1000 Pa-2000 Pa- 5 kPa 500 Pa-1000	1 Pa-10 Pa
1- 500 mbar		Pa -2000 Pa	1 Pa
1-2 bar	10 mbar	1000 Pa -2000 Pa - 5 kPa -10 kPa 2000	1 Pa -10 Pa
0- 5 bar		Pa - 5 kPa -10 kPa -20 kPa 5 kPa -10	1 Pa -10 Pa
0-10 bar		kPa-20 kPa- 50 kPa	10 Pa

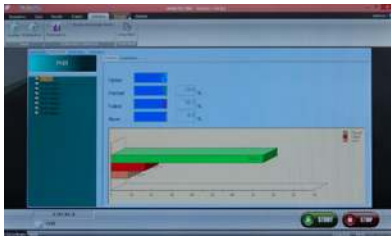
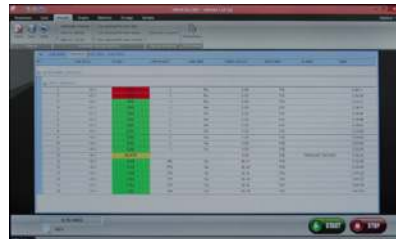
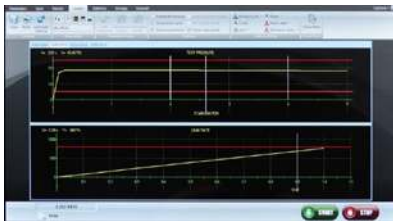
Main Features

- Leak testing by pressure drop (up to 10 bar)
- Measurement ranges: Δ P.E.: 500 Pa to 50 kPa
- Integrated fill and dump valves
- 2 Pressure tests or vacuum
- Industrial touch screen panel PC
- Pass/Fail indicator lights
- Ethernet Port
- Flexible communication formats: RS232, USB (for printer and PC)

Technical Specifications

- Physical** Physical Weight: 21 LB
- External Electrical Supply** Voltage: 90-260 V AC
- Air Supply** Clean and dry air
Air quality standard to be applied (ISO 8573-1)
- Temperature** Operating: 50° F to 113° F
Storage 32° F to 140° F

Software



Accessories

- Printer
- Leak flow calibrator
- Set up online
- Leak jets
- Filtration kit
- Connectors



PRESSURE CALIBRATOR



CONNECTORS

ATEQ