

We test, You produce

ATEQ PCS Software

ATEQ's world-renowned leak testing hardware can now be embedded with Bauer's powerful custom PCS software solution. It is designed specifically for ATEQ to make programming and collecting leak testing data easy and detailed, and has supervision and an analytical software suite for production and laboratories. The software has full management of external Input and Output (lights, remote controls, external valves, bar codes, special leak and flow cycles) as PLC is not needed.

Highlights

- Powerful Built-In Analytics Tools
- Test Results History
- Automatic Alarms
- Notification Log
- Test Execution Controls
- Oscilloscope Graphing
- Escalation Management System

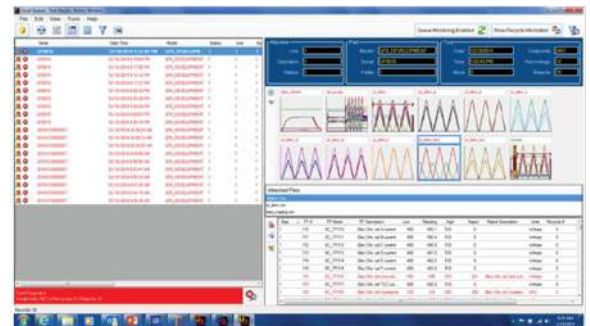


BAUER

Alarms & Notifications

Group	Name	Description	Default	Enabled		
Process Control Rules Monitor	TestMonitorConfiguration	Monitor configuration for testing only		✓	⬆	✎
BPS Health Monitors	TestBPSMonitorConfig	BPS Monitor configuration for testing o...		✓	⬆	✎
Process Control Rules Monitor	DefaultProcessControlConfiguration	Default configuration for Process Contr...	✓		⬆	✎
Process Control Rules Monitor	TrainingMonitor	Monitor configuration for testing only		✓	⬆	✎
BPS Health Monitors	ConfigTest1	This is a test of new Api Call		✓	⬆	✎
Process Control Rules Monitor	Test	Created from web		✓	⬆	✎
Process Control Rules Monitor	ConfigTest2	This is a test of new Api Call		✓	⬆	✎
Dynamic Limits Monitor	Test123	Some random configuration by TA		✓	⬆	✎

Test Results History

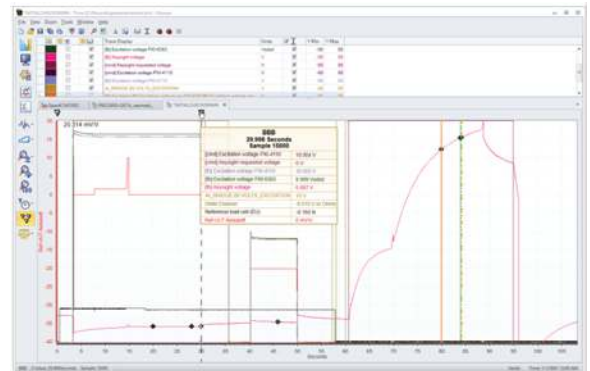


PCS Software is compatible with the following ATEQ instruments:

- F520
- F620
- D620
- D520
- MF520



Oscilloscope

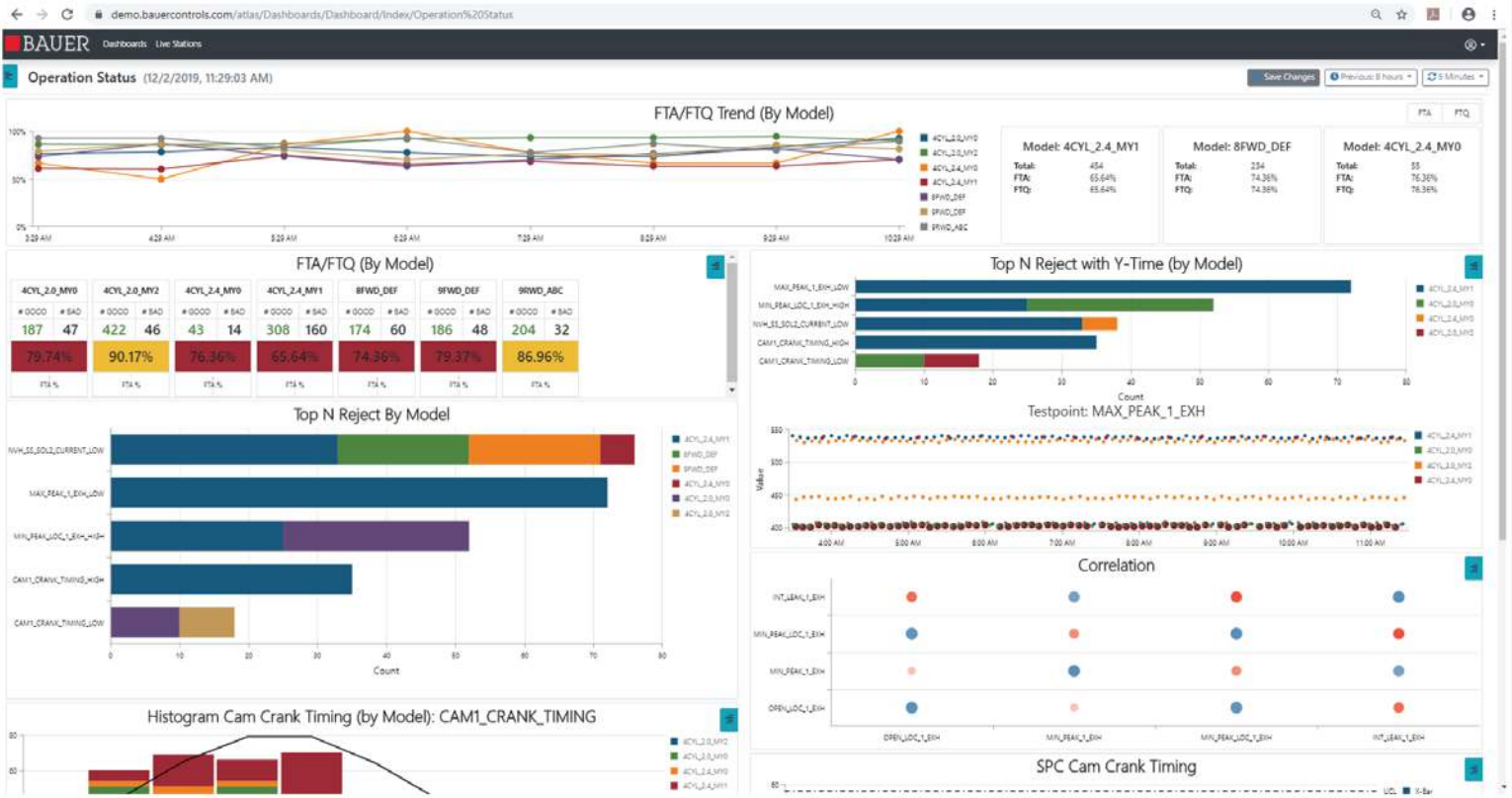


ATEQ

We test, You produce

ATEQ PCS Software

Web Analytics



Pearson Correlation Matrix

X-Bar, Range, Std. Deviation

Cp, Cpk

Histograms

Y-Time w/Color Density

X-Y Plots

Individual Dynamic Limits

Pattern Matching

Nelson Rules

Part Birth History & Genealogy

Alarms & Notifications

Analytics tools built-in.

Computer Requirements:
 Processor - Core i7 6th Gen or Higher (Quad core with HT)
 RAM - 16 Gb
 Storage - SSD preferred 250 Gb or higher (Depends on project storage needs)
 DirectX11 compatible graphics hardware required.
 SXGA (1280 x 1024) screen resolution. 1080p (1920x1080) is recommended.



USA HQ 35980 Industrial Rd.
 734-838-3100 atequsa.com

Livonia, MI 48150
 leaktestsales@atequsa.com